

SSS-Furka-41(50ul)



Oil Pattern Distance: 41 Feet **Reverse Brush Drop:** 36 Feet **Oil Per Board:** 50 uL
Forward Oil Total: 15.75 mL **Reverse Oil Total:** 9.8 mL **Volume Oil Total:** 25.55 mL
Forward Boards Crossed: 315 Boards **Reverse Boards Crossed:** 196 Boards **Total Boards Crossed:** 511 Boards

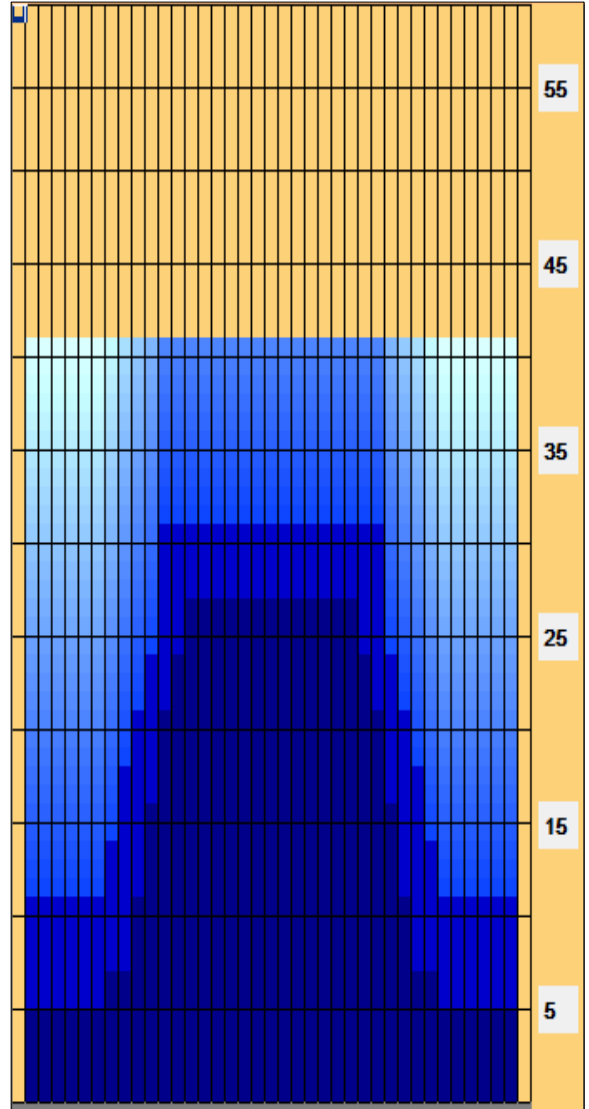
	Start	Stop	Loads	Speed	Crossed	Start	End	Feet	T.Oil
1	2L	2R	4	14	148	0.0	5.9	5.9	7400
2	8L	8R	1	14	25	5.9	7.8	1.9	1250
3	10L	10R	2	14	42	7.8	11.7	3.9	2100
4	11L	11R	2	18	38	11.7	16.8	5.1	1900
5	12L	12R	2	18	34	16.8	21.9	5.1	1700
6	13L	13R	1	18	15	21.9	24.4	2.5	750
7	14L	14R	1	22	13	24.4	27.5	3.1	650
8	2L	2R	0	22	0	27.5	36.0	8.5	0
9	2L	2R	0	30	0	36.0	41.0	5.0	0

	Start	Stop	Loads	Speed	Crossed	Start	End	Feet	T.Oil
1	2L	2R	0	30	0	41.0	31.0	-10.0	0
2	12L	12R	2	26	34	31.0	23.7	-7.3	1700
3	11L	11R	1	22	19	23.7	20.6	-3.1	950
4	10L	10R	1	22	21	20.6	17.5	-3.1	1050
5	9L	9R	1	22	23	17.5	14.4	-3.1	1150
6	8L	8R	1	22	25	14.4	11.3	-3.1	1250
7	2L	2R	2	14	74	11.3	7.4	-3.9	3700
8	2L	2R	0	14	0	7.4	0.0	-7.4	0

Conditioner:
 Type In or Select
 One

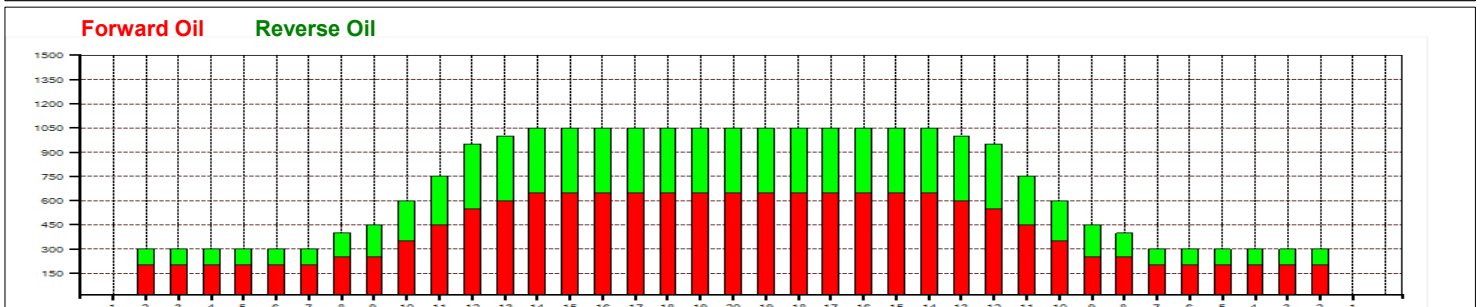
 TransferType:
 Type In or Select
 One

- Forward
- Reverse
- Combined
- Buff



Drop Brush In reverse @ 35

Item	3L-7L:18L-18R	8L-12L:18L-18R	13L-17L:18L-18R	18L-18R:17R-13R	18L-18R:12R-8R	18L-18R:7R-3R
Description	Outside Track:Middle	Middle Track:Middle	Inside Track:Middle	Middle: Inside Track	Middle:Middle Track	Middle:Outside Track
Track Zone Ratio	3.5	1.67	1.01	1.01	1.67	3.5



SSS-San-Gottardo-40(50ul)



Oil Pattern Distance: 40 Feet **Reverse Brush Drop:** 30 Feet **Oil Per Board:** 50 uL
Forward Oil Total: 14.85 mL **Reverse Oil Total:** 10.3 mL **Volume Oil Total:** 25.15 mL
Forward Boards Crossed: 297 Boards **Reverse Boards Crossed:** 206 Boards **Total Boards Crossed:** 503 Boards

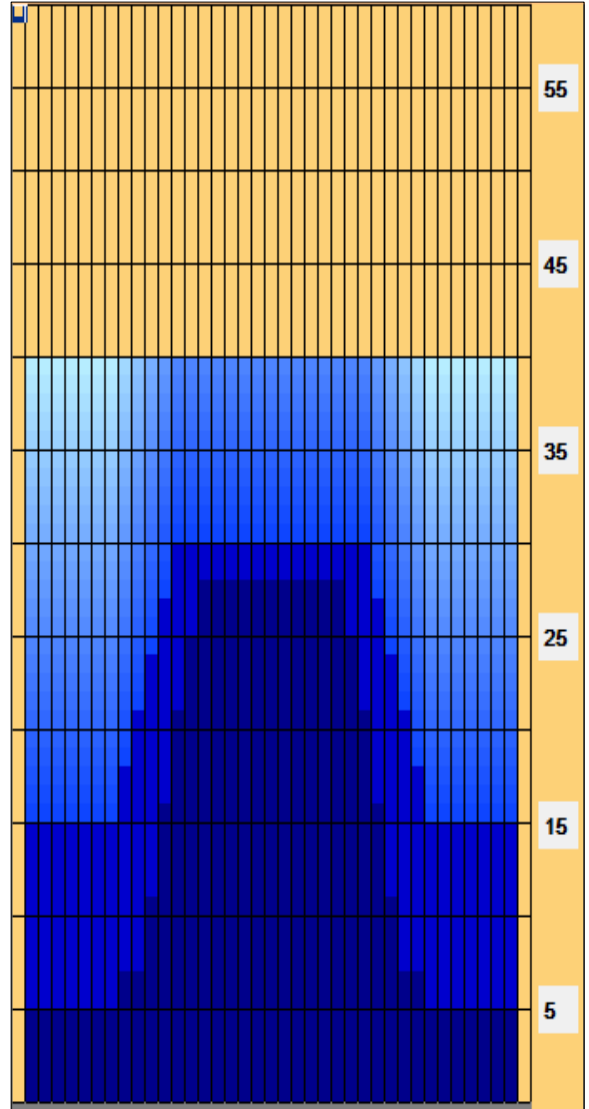
	Start	Stop	Loads	Speed	Crossed	Start	End	Feet	T.Oil
1	2L	2R	4	14	148	0.0	5.9	5.9	7400
2	9L	9R	1	14	23	5.9	7.8	1.9	1150
3	11L	11R	2	14	38	7.8	11.7	3.9	1900
4	12L	12R	2	18	34	11.7	16.8	5.1	1700
5	13L	13R	2	18	30	16.8	21.9	5.1	1500
6	14L	14R	1	22	13	21.9	25.0	3.1	650
7	15L	15R	1	22	11	25.0	28.1	3.1	550
8	2L	2R	0	22	0	28.1	35.0	6.9	0
9	2L	2R	0	26	0	35.0	40.0	5.0	0

	Start	Stop	Loads	Speed	Crossed	Start	End	Feet	T.Oil
1	2L	2R	0	30	0	40.0	30.0	-10.0	0
2	13L	13R	1	22	15	30.0	26.9	-3.1	750
3	12L	12R	1	22	17	26.9	23.8	-3.1	850
4	11L	11R	1	22	19	23.8	20.7	-3.1	950
5	10L	10R	1	22	21	20.7	17.6	-3.1	1050
6	9L	9R	1	18	23	17.6	15.1	-2.5	1150
7	2L	2R	3	18	111	15.1	7.5	-7.6	5550
8	2L	2R	0	14	0	7.5	0.0	-7.5	0

Conditioner:
 Type In or Select One

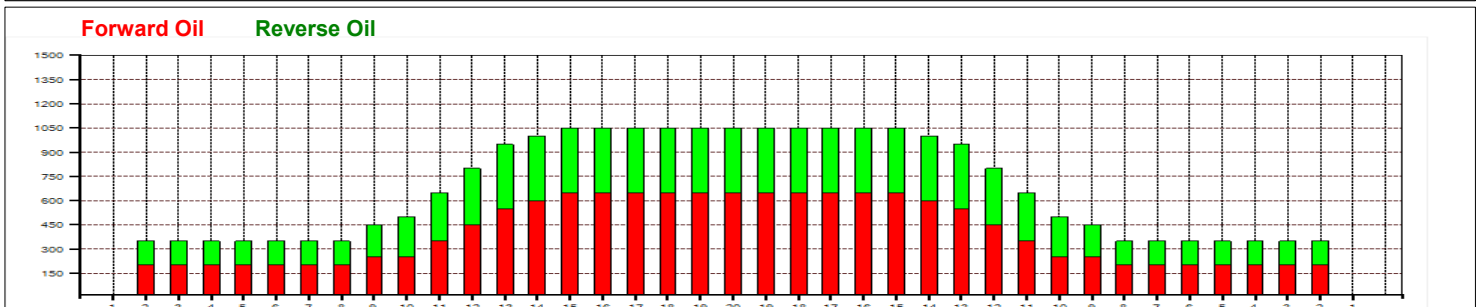
 TransferType:
 Type In or Select One

- Forward
- Reverse
- Combined
- Buff



Drop Brush In Reverse @ 35

Item	3L-7L:18L-18R	8L-12L:18L-18R	13L-17L:18L-18R	18L-18R:17R-13R	18L-18R:12R-8R	18L-18R:7R-3R
Description	Outside Track:Middle	Middle Track:Middle	Inside Track:Middle	Middle: Inside Track	Middle:Middle Track	Middle:Outside Track
Track Zone Ratio	3	1.91	1.03	1.03	1.91	3



SSS-Nufenen-39(50ul)



Oil Pattern Distance: 39 Feet **Reverse Brush Drop:** 30 Feet **Oil Per Board:** 50 uL
Forward Oil Total: 14.2 mL **Reverse Oil Total:** 10.35 mL **Volume Oil Total:** 24.55 mL
Forward Boards Crossed: 284 Boards **Reverse Boards Crossed:** 207 Boards **Total Boards Crossed:** 491 Boards

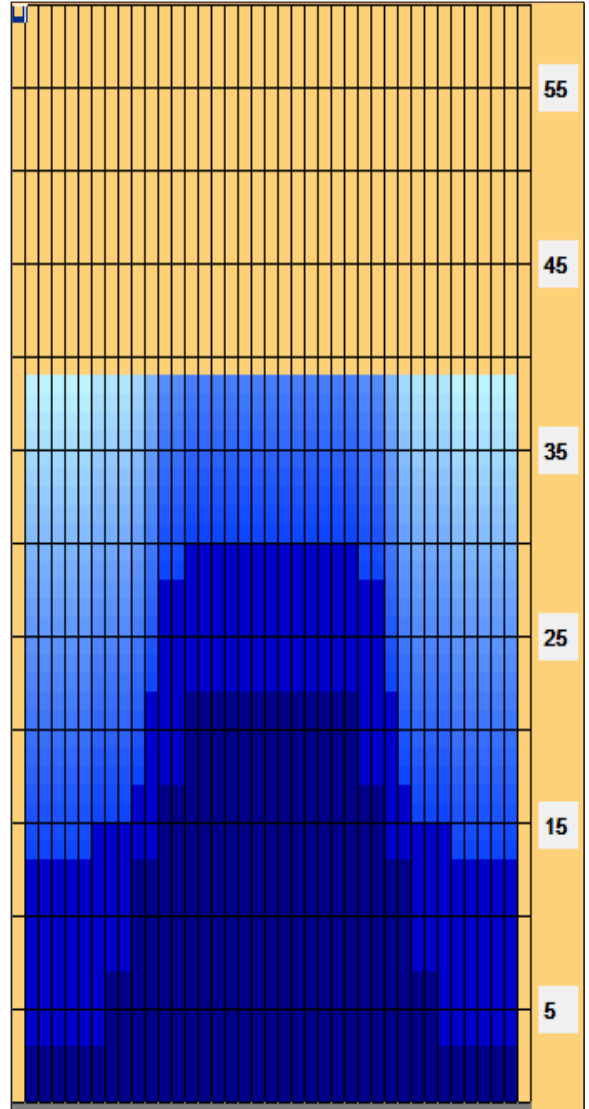
	Start	Stop	Loads	Speed	Crossed	Start	End	Feet	T.Oil
1	2L	2R	3	14	111	0.0	3.9	3.9	5550
2	8L	8R	2	14	50	3.9	7.8	3.9	2500
3	10L	10R	3	14	63	7.8	13.7	5.9	3150
4	12L	12R	2	14	34	13.7	17.6	3.9	1700
5	14L	14R	2	18	26	17.6	22.7	5.1	1300
6	2L	2R	0	18	0	22.7	28.0	5.3	0
7	2L	2R	0	22	0	28.0	34.0	6.0	0
8	2L	2R	0	26	0	34.0	39.0	5.0	0

	Start	Stop	Loads	Speed	Crossed	Start	End	Feet	T.Oil
1	2L	2R	0	30	0	39.0	30.0	-9.0	0
2	14L	14R	1	18	13	30.0	27.5	-2.5	650
3	12L	12R	2	18	34	27.5	22.4	-5.1	1700
4	11L	11R	2	18	38	22.4	17.3	-5.1	1900
5	10L	10R	1	18	21	17.3	14.8	-2.5	1050
6	7L	7R	1	14	27	14.8	12.9	-1.9	1350
7	2L	2R	2	14	74	12.9	9.0	-3.9	3700
8	2L	2R	0	14	0	9.0	0.0	-9.0	0

Conditioner:
 Type In or Select One

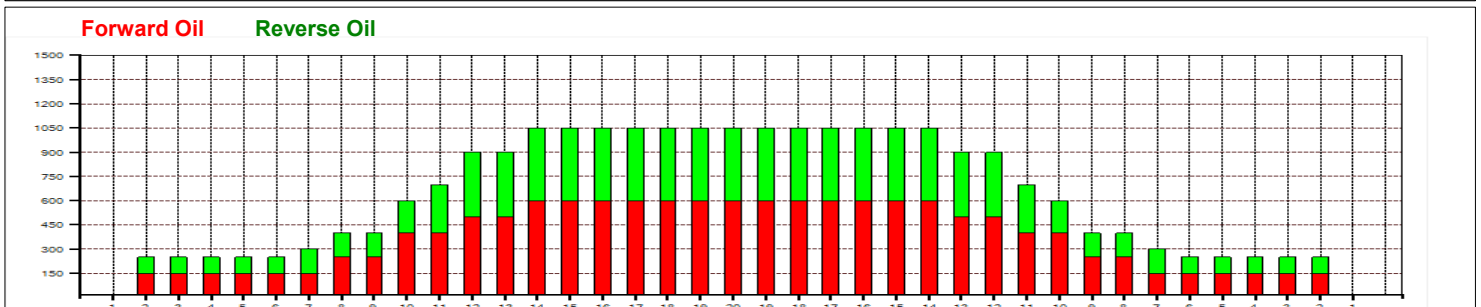
 TransferType:
 Type In or Select One

- Forward
- Reverse
- Combined
- Buff



Brush Drop In Reverse @ 33 Feet

Item	3L-7L:18L-18R	8L-12L:18L-18R	13L-17L:18L-18R	18L-18R:17R-13R	18L-18R:12R-8R	18L-18R:7R-3R
Description	Outside Track:Middle	Middle Track:Middle	Inside Track:Middle	Middle: Inside Track	Middle:Middle Track	Middle:Outside Track
Track Zone Ratio	4.04	1.75	1.03	1.03	1.75	4.04



SSS-Grand-Saint-Bernard-43(50ul)



Oil Pattern Distance: 43 Feet **Reverse Brush Drop:** 43 Feet **Oil Per Board:** 50 uL
Forward Oil Total: 14.4 mL **Reverse Oil Total:** 10.5 mL **Volume Oil Total:** 24.9 mL
Forward Boards Crossed: 288 Boards **Reverse Boards Crossed:** 210 Boards **Total Boards Crossed:** 498 Boards

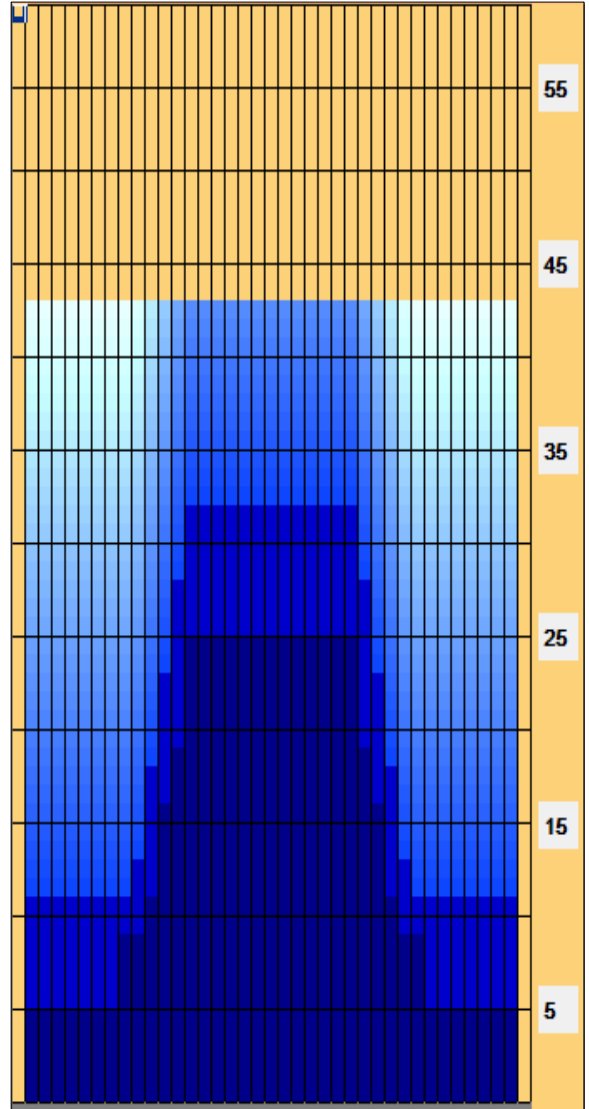
	Start	Stop	Loads	Speed	Crossed	Start	End	Feet	T.Oil
1	2L	2R	4	14	148	0.0	5.9	5.9	7400
2	9L	9R	2	14	46	5.9	9.8	3.9	2300
3	11L	11R	1	14	19	9.8	11.7	1.9	950
4	12L	12R	2	18	34	11.7	16.8	5.1	1700
5	13L	13R	1	18	15	16.8	19.3	2.5	750
6	14L	14R	2	22	26	19.3	25.5	6.2	1300
7	2L	2R	0	22	0	25.5	33.0	7.5	0
8	2L	2R	0	26	0	33.0	43.0	10.0	0

	Start	Stop	Loads	Speed	Crossed	Start	End	Feet	T.Oil
1	2L	2R	0	30	0	43.0	32.0	-11.0	0
2	14L	14R	1	26	13	32.0	28.4	-3.6	650
3	13L	13R	2	18	30	28.4	23.3	-5.1	1500
4	12L	12R	2	18	34	23.3	18.2	-5.1	1700
5	11L	11R	2	18	38	18.2	13.1	-5.1	1900
6	10L	10R	1	14	21	13.1	11.2	-1.9	1050
7	2L	2R	2	14	74	11.2	7.3	-3.9	3700
8	2L	2R	0	10	0	7.3	0.0	-7.3	0

Conditioner:
 Type In or Select One

 TransferType:
 Type In or Select One

- Forward
- Reverse
- Combined
- Buff



Item	3L-7L:18L-18R	8L-12L:18L-18R	13L-17L:18L-18R	18L-18R:17R-13R	18L-18R:12R-8R	18L-18R:7R-3R
Description	Outside Track:Middle	Middle Track:Middle	Inside Track:Middle	Middle: Inside Track	Middle:Middle Track	Middle:Outside Track
Track Zone Ratio	3.67	2.16	1.03	1.03	2.16	3.67

